

THE ROLLING THUNDER



January 2025

SHERMAN COUNTY SWCD & WATERSHED COUNCIL

Soil & Water Conservation District

Upcoming Meetings

The next SWCD meeting is January 14th at 8:30 am in the USDA Service Center Conference Room.

Board of Directors

Sherman County SWCD would like to say thank you to Clint Moore and Trevor Fields for their years of service on our Board of Directors. Welcome Brian Simantel and Ryan Thompson, as new members to our board.



County Cost Share

The SWCD has available funding for County Cost Share (CCS) grants! CCS funds conservation projects in crop, range, and/or riparian areas. Eligible CCS projects include **cross and border fencing, haul roads, spring development, solar water development, weed treatment, range seeding, riparian restoration, and more.** Projects up to \$20,000 have a 75% cost share rate. Our completion deadline for all CCS projects is now 2 years from the date of approval. Call Taylor at 541-565-3216 ext. 110 to learn more or to apply. There is no deadline to apply. Applications are reviewed every month at SWCD board meetings.

Sherman County Area Watershed Council

Upcoming Meetings

The next Council meeting is February 11th at 8:00 am in the USDA Service Center Conference Room.

Oregon Watershed Enhancement Board (OWEB) Funding Available!

We have OWEB Small Grant funding available. Sherman County has two Small Grant Areas, the Lower John Day and the Lower Deschutes. The Small Grant Program awards up to \$15,000 for on the ground restoration projects.

Eligible projects include (but are not limited to):

- Livestock and wildlife water developments
- Range seeding
- Riparian planting
- In-stream restoration
- Cross fence
- Cropland erosion control



How to Reach Us

USDA Service Center
2004 First Street, Moro, OR
(Open Monday through Friday, 8:00am-4:30pm)



Amanda Whitman
SWCD District Manager
541-565-3216 ext. 109
Amanda.whitman@or.nacdnet.net



Marylou Martin
SWCD Office Assistant
541-565-3216 ext. 101
Marylou.martin@or.nacdnet.net



Taylor Bullock
SWCD Watershed Technician
541-565-3216 ext. 110
Taylor.bullock@or.nacdnet.net



Home School Program



The SWCD and Sherman County Prevention are teaming up to bring "Conservation for Kids" to home schoolers in grades K-5! Our free monthly lessons will include activities and take-home projects. We will be bringing an interactive watershed model to the Wasco Event Center on January 23rd at 10:00am. To sign up, please provide names and grades of students who are attending.

Sign up:

Call: 541-565-3216

Text: 541-705-5161

or email: shermancountywc@gmail.com

***The Oregon Community Foundation and The Roundhouse Foundation provided funds for this program**

Farm Service Agency (FSA)

Please be aware of the upcoming FSA Deadlines & Important Dates:

Staff from the USDA Service Center in Sherman County wish everyone a Happy Holiday Season and best wishes for a prosperous and safe New Year. Please note, with adverse weather, our office may open late some days or send staff home early. Thank you for your patience.



- **January 8, 2025:** First County Committee Meeting/Organizational Meeting

January 1 – February 28, 2025 - CRP (Conservation Reserve Program): Emergency grazing available to livestock grazers impacted by 2024 wildfires. Please contact FSA for more information.

[Sherman County Farm Service Agency Announces County Committee Election Results](#)

USDA Farm Service Agency (FSA) announced that County Committee elections are over and the ballots have been counted.

Whitney Nogle of Grass Valley was elected to represent Local Administrative Area (LAA) 3.

County committee members are a critical component of the day-to-day operations of FSA. They help deliver programs at the county level and work to serve the needs of local producers. All recently elected county committee members will take office in January 2025 and will be joining the existing committee. Every FSA office is required to have a county committee, and they are made up of local farmers, ranchers and foresters who are elected by local producers.

Nearly 7,800 FSA county committee members serve FSA offices nationwide. Each committee has 3 to 11 elected members who serve three-year terms of office. Approximately one-third of county committee seats are up for election each year. County committee members impact the administration of FSA within a community by applying their knowledge and judgment to help FSA make important decisions on its commodity support programs, conservation programs, indemnity and disaster programs, emergency programs and eligibility.

County committee members impact producers through their decision making and help shape the culture of a local FSA office. They also ensure the fair and equitable administration of FSA farm programs in their counties and are accountable to the Secretary of Agriculture. Members conduct hearings and reviews as requested by the state committee, ensure underserved farmers, ranchers, and foresters are fairly represented, make recommendations to the state committee on existing programs, monitor changes in farm programs and inform farmers of the purpose and provisions of FSA programs. They also assist with outreach and inform underserved producers such as beginning farmers, ranchers, and foresters, about FSA opportunities.

For more information, visit the FSA website at fsa.usda.gov/elections or contact the Sherman County FSA office at 541-565-3551 ext. 2.

FSA Outlines Marketing Assistance Loan Policy

Marketing Assistance Loans (MALs) provide financing and marketing assistance for wheat and feed grains. MALs provide you with interim financing after harvest to help you meet cash flow needs without having to sell your commodities when market prices are typically at harvest-time lows. A producer who is eligible to obtain a loan, but agrees to forgo the loan, may obtain an LDP if such a payment is available.

FSA is now accepting requests for **2024 MALs** and LDPs for all eligible commodities after harvest. Requests for loans and LDPs shall be made on or before the final availability date for the respective commodities. The loan price for 2024 Wheat is \$4.03/bushel and Barley is \$2.83/bushel.

To be considered eligible for an LDP, you must have form CCC-633EZ, Page 1 on file at your local FSA Office before losing beneficial interest in the crop. Pages 2, 3 or 4 of the form must be submitted when payment is requested.

Marketing loan gains (MLGs) and loan deficiency payments (LDPs) are no longer subject to payment limitations, actively engaged in farming and cash-rent tenant rules.

Adjusted Gross Income (AGI) provisions state that if your total applicable three-year average AGI exceeds \$900,000, then you're not eligible to receive an MLG or LDP. You must have a valid CCC-941 on file to earn a market gain of LDP. The AGI does not apply to MALs redeemed with commodity certificate exchange.

For more information and additional eligibility requirements, contact your Sherman County USDA Service Center at 541-565-3551 or visit fsa.usda.gov.

Eastern Lower Deschutes Strategic Implementation Area (SIA)

There is now funding available for restoration projects within the Eastern Lower Deschutes SIA area. Projects must demonstrate a clear watershed benefit to aquatic species, wildlife, or watershed health and be one of the eligible project types listed below.

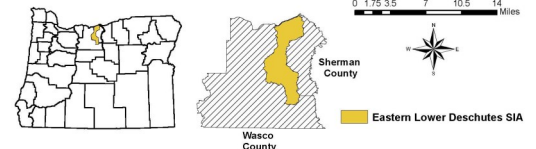
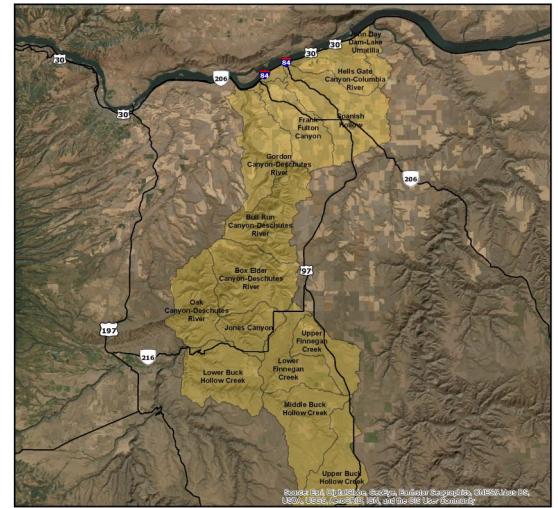
Projects commonly used to restore or protect Agricultural Water Quality:

- Manage Nutrient and Sediment Inputs through managed grazing (e.g., fencing and developing off-channel watering) and plantings.
- Manage Vegetation: plant or seed native riparian species, propagate native riparian plants, or control weeds in conjunction with a restoration project.
- Manage Vegetation: control weeds (in conjunction with a restoration project), or plant native wetland species.
- Manage Erosion on Agricultural Lands: terrace land; employ laser leveling; create windbreaks; install water and sediment control basins (WASCBs); develop filter strips/grassed waterways; manage mud (e.g., gravel high-use areas, develop paddocks); seed bare areas, reduce tillage.
- Manage Nutrient and Sediment Inputs to Streams through the management of grazing, vegetation cover, animal waste, or irrigation runoff.
- Improve Surface Drainage: surface road drainage improvements, gravel surfacing, stream crossings.
- Manage Erosion: bioengineer stream banks, slope stream banks, or develop water gaps, streambank barbs.
- Implement Irrigation Practices.
- Decommission Roads.

Additional eligible project types:

- Improve Instream Habitat: place large wood, boulders, or salmon carcasses.
- Fish Passage: Remove Irrigation or Push-Up Dams, Remove and/or Replace Culverts, Remove or Replace Stream Crossings.
- Restore Wetlands: excavate or remove fill, or eliminate drainage structures.
- Install Stormwater Runoff Treatments.
- Create Off-Channel Flood Storage.
- Employ Integrated Pest Management.
- Eradicate or Control Exotic Aquatic Species.
- Manage Vegetation: prescribed burning, except when conducted as part of a commercial harvest; non-commercial thinning; control/remove juniper (except late-seral/old growth); plant or seed (native upland species or native beneficial mixes preferred); or control weeds (in conjunction with a restoration project). Projects for prescribed burning to reduce fuel loads require ODF technical review and approval, or tribal government review and approval for projects on Tribal Trust Lands, using a standard OWEB form.
- Manage Wildlife: install water guzzlers.

The application deadline is March 20, 2025. You may request up to \$15,000. If you have a project that you think may fit this criteria, please contact Taylor at 541-565-3216 ext. 110 for more information.



Eastern Lower Deschutes Strategic Implementation Area



Watershed Education Incentive Program

The Watershed Education Incentive Program is to provide financial resources for local conservation education including workshops, demonstrations and youth conservation projects; to provide technical resources for implementation of education projects that will benefit Sherman County residents and resources; and to assist with worthwhile projects that don't fit traditional funding sources.

Applicants can apply for up to \$2,000.

Past grants have included greenhouse projects, field trips, 4-H camp, tree planting, chick hatching projects, and more! Call us at 541-565-3216 for more information or to apply.

All of the SWCD's education outreach this fall was made possible thanks to a generous grant from the Sherman County Education Foundation.

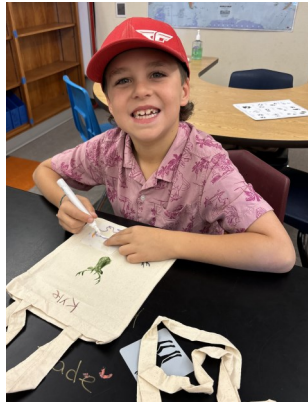
Planting at Bill Todd Memorial

The SWCD staff had fun planting daffodils with second graders at Sherman School, along with their teachers, Jessie Fields and Teresa Nelson. We started with a short hike to the Bill Todd Memorial, followed by investigating the parts of the bulb, digging holes 6 inches deep, planting the daffodil with the correct side facing up, and filling in the hole. We are all excited to see the flowers come up in the spring!



Track Identifiers and Recycled Bags

The SWCD staff spent a day making animal trackers with grades K-5 and their Specials teacher, Teresa Nelson. They used their identifiers to find out which animals made the tracks on the classroom walls. The third grade class reviewed the importance of recycling. They stenciled animals pictures on recycled canvas bags.



Animal Habitats

Youth in grades K-5 made clay animals, learned about animal habitats, and created diorama habitats with Mrs. Nelson (Specials teacher) and the SWCD in November. Home schoolers picked up "Conservation Activity Kits" from our office and made animals and habitats at home.



Salmon and Trout Enhancement Program

Sherman County 4th and 5th grade classes participated in the Salmon and Trout Enhancement Program (STEP) this fall. They received Rainbow Trout eggs from the Oaks Springs Fish Hatchery in early October. Both classes closely monitored the eggs and newly-hatched fry, checking water temperature and the water pH. The students were able to observe the fry's yolk sacks, growth, movements, and to learn about the life cycle of freshwater fish. The 5th grade fry were released in the Burnet Pond by SWCD and NRCS staff. The 4th grade students released their fry in the Nogle Pond. After the fish release, trees were planted all around the pond. The Cabral family cooked a delicious BBQ lunch for everyone!



NACD Poster Contest "May the Forest Be with You Always"

The National Association of Conservation Districts (NACD) sponsors a poster contest, in which all students are invited to participate regardless of public, private, or home-school institution. Six students won first-place in our local Sherman County contest



Remington



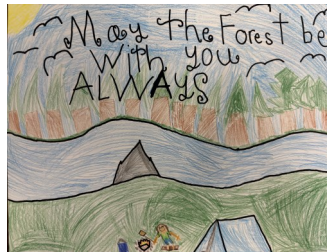
Addilyn



Elizabeth



Sara Jo



Willow



Kyler

All of the winning posters were sent on to compete at the State level. The 3 Sherman County students on the right had winning posters in the State contest. Congratulations to Remington, Willow, and Elizabeth! These 3 posters have been sent on to compete at the national level.



Oregon State University Extension Service

Farm First Aid Trainings

January 15: 1 pm—5pm, The Dalles, CGCC, Building 2

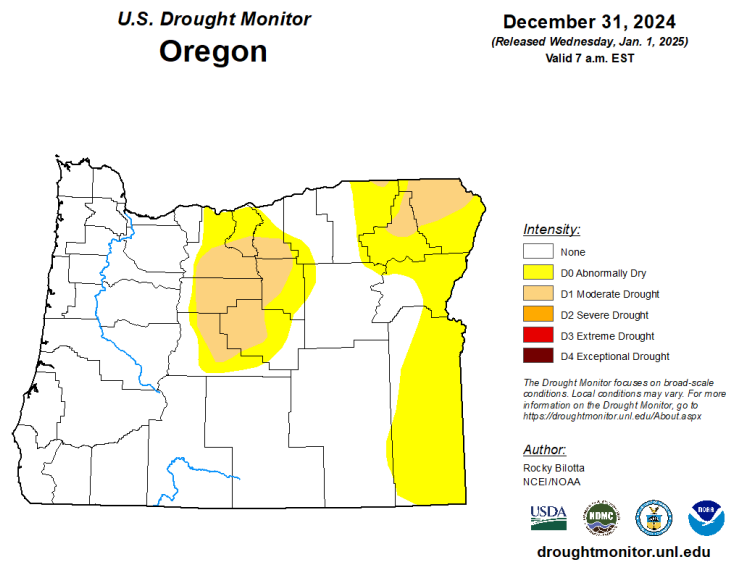
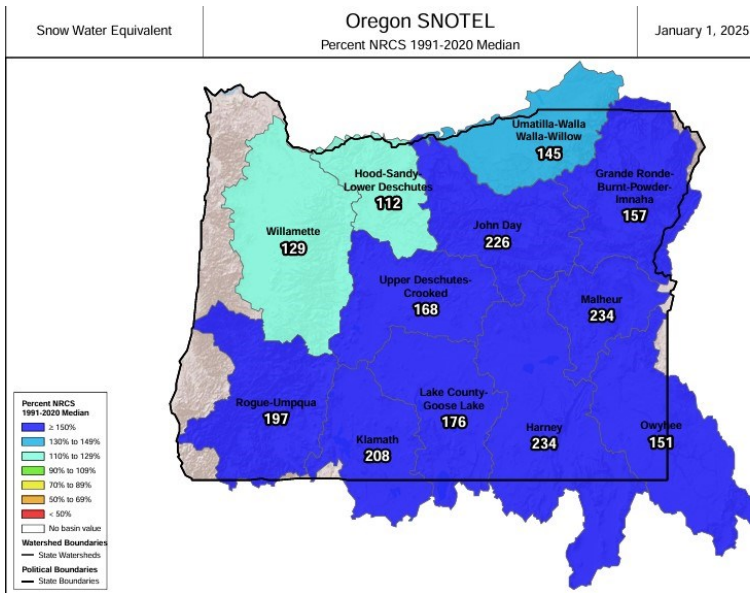
February 17: 1pm—5pm, The Dalles, CGCC Building 2, **In Spanish**

March 6: 1pm—5pm, Hood River (location TBD), **In Spanish**

Trainings cost \$25 and provide hands-on CPR and Stop the Bleed training with a focus on preventing and responding to traumatic farm accidents.

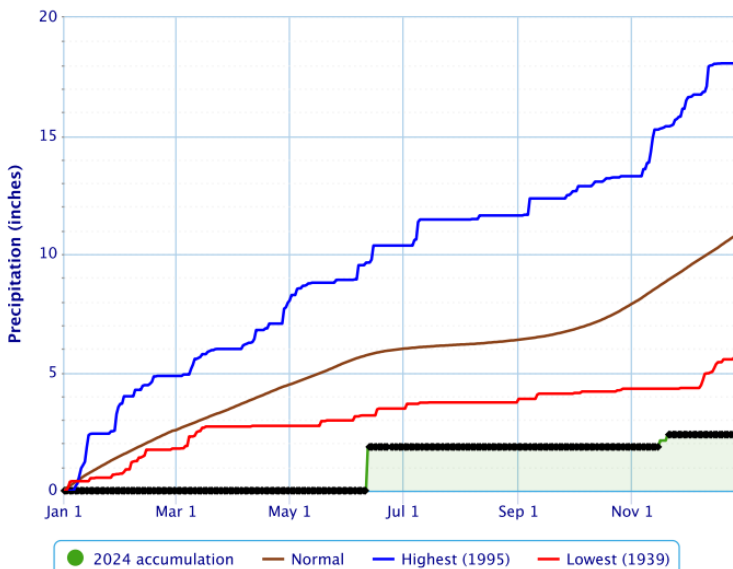
Contact Jacob Powell for questions at 541-298-3581 or email Jacob.powell@oregonstate.edu

Moro Weather



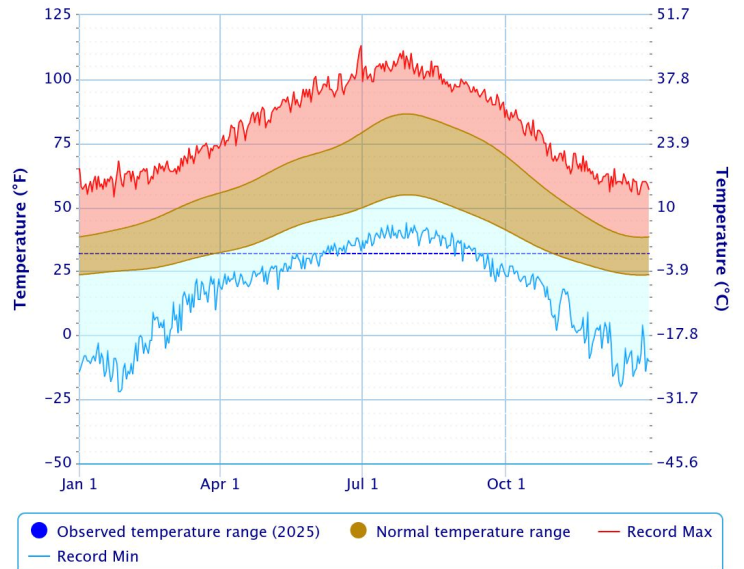
Accumulated Precipitation – MORO, OR

Click and drag to zoom to a shorter time interval; green/black diamonds represent subsequent/missing values



Daily Temperature Data – MORO, OR

Period of Record – 1898-01-03 to 2024-11-30. Normals period: 1991–2020. Click and drag to zoom chart.



National Resources Conservation Service (NRCS)



Important Deadlines:

EQIP

January 31, 2025

Producers need to have completed their application process which includes receiving and signing your EQIP cost estimate.

March 14, 2025

Applications that received the first-round funding will be announced. Please remember that we often receive additional funding throughout the year.

CSP General

February 28, 2025

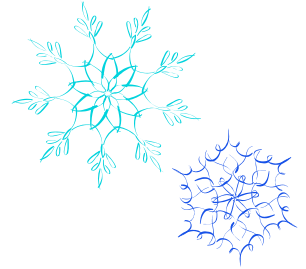
Producers need to verify they have an active CSP General 2025 Application in the system. Please call the office if you are unsure of your status.

June 1, 2025

Producers must verify they have all their FSA eligibility completed and updated in the system.

June 13, 2025

NRCS will announce who has received funding.



General Information

Beginning of February (TBD)

NRCS will be holding the Local Working Group meeting.

NRCS will be hosting the 2nd Catastrophic Fire Meeting for Sherman County

Local Advertisements

BUSINESS OWNERS!!!!

Are you interested in showcasing your business cards in our newsletter?

Advertisements are \$20 per issue or \$75 for the year! Issues are dispersed quarterly. For those of you who previously advertised, if you haven't renewed don't get left out! Call our office today!

DEGRANGE
Construction, LLC.

OR LIC# 161930
WA LIC# DEGRACL961R3

Ken DeGrange
cell: (541) 993-0442

Mike DeGrange
cell: (541) 993-1963

office: (541) 442-5712 • fax: (541) 442-8588
PO BOX 222 • Wasco, OR 97065 • dcl@saw.net

Your Business
Advertised
Here

Contact Sherman
County SWCD at
541-565-3216



Your Business
Advertised
Here

Contact Sherman
County SWCD at
541-565-3216



Your Business
Advertised
Here

Contact Sherman
County SWCD at
541-565-3216



Your Business
Advertised
Here

Contact Sherman
County SWCD at 541-
565-3216



 **Bank of
Eastern Oregon**

Personal Banking / Business Banking
Branch Manager: Chelsie Messenger

Agricultural / Commercial Lending
Shane Lazinka

**MORO: 508 Main Street
541-565-3712**

Member FDIC

~ CONSERVATION CALENDAR ~

January 14: SWCD Regular Board Meeting, 8:30am
January 20: Martin Luther King Jr. Day, office closed
January 23: Home school @ Wasco Event Center, 10am
February 11: Watershed Council Meeting, 8:00am
February 11: SWCD Regular Board Meeting, 8:30am
February 17: President's Day, office closed
March 20: Eastern Lower Deschutes SIA app. due

~ TREE SALE ~

Look for tree sale order forms soon in Sherman County area post offices and on our website: www.shermancountyswcd.com.

Trees and shrubs look great and can serve many purposes including providing shade, creating a wind break, stabilizing stream banks, creating wildlife and pollinator habitat, improving property value, and more!



~ BOARD & STAFF ~

SWCD Staff

Amanda Whitman, District Manager
Marylou Martin, Office Assistant
Taylor Bullock, Watershed Technician
Vacant, Watershed Coordinator

NRCS Staff

Misty Strayhorn, District Conservationist
Becky Hilderbrand, Conservation Technician
Theron Taylor, Conservation Technician

Sherman County SWCD Board of Directors

Jesse Stutzman, Chair
Josh Hilderbrand, Vice Chair
Clint Moore, Treasurer
Trevor Fields, Secretary
Nick von Borstel, Member

"The farm is part of me"—Erich Wehrenberg

We're on the Web! Don't forget to check us out for current news! www.shermancountyswcd.com

We're also on Facebook @ Sherman County SWCD

The U.S. Department of Agriculture (USDA) prohibits discrimination in all its programs and activities on the basis of race, color, national origin, age, disability, and where applicable, sex, marital status, familial status, parental status, religion, sexual orientation, genetic information, political beliefs, reprisal, or because all or a part of an individual's income is derived from any public assistance program. (Not all prohibited bases apply to all programs.) Persons with disabilities who require alternative means for communication of program information (Braille, large print, audiotape, etc.) should contact USDA's TARGET Center at (202)720-2600 (voice and TDD). To file a complaint of discrimination write to USDA, Director, Office of Civil Rights, 1400 Independence Avenue, S.W., Washington, D.C. 20250-9410 or call (800)795-3272 (voice) or (202)720-6382 (TDD). USDA is an equal opportunity provider and employer.

NONPROFIT ORG
US POSTAGE PAID
MORO, OR 97039
PERMIT # 15

Sherman County SWCD
P.O. Box 405
Moro, OR 97039